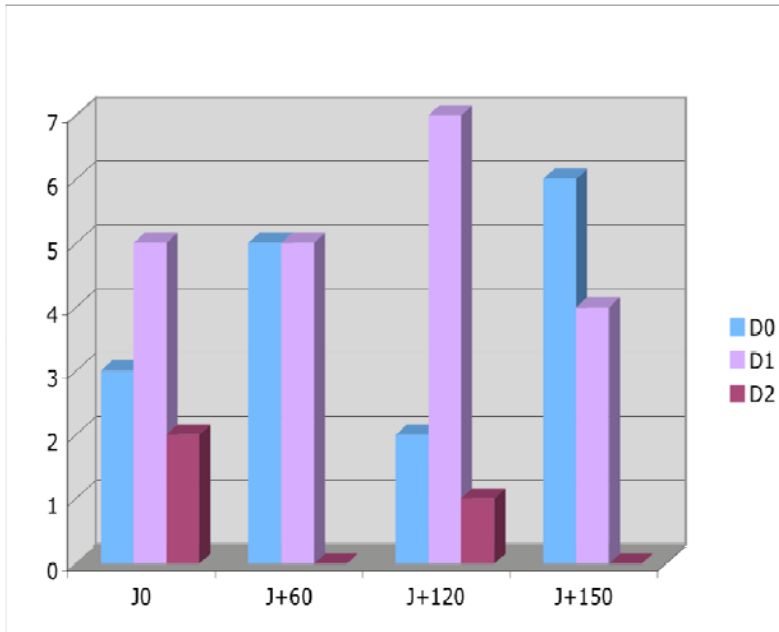


# PSORIASIS

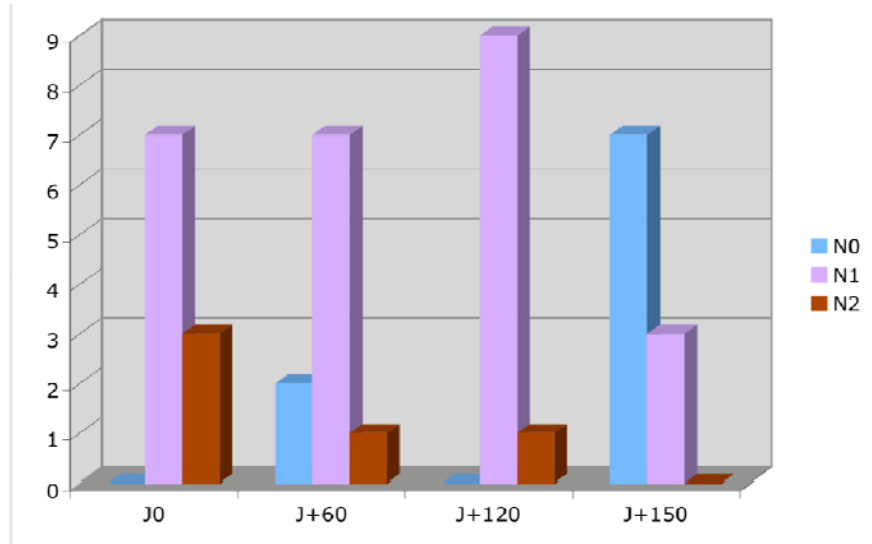
## EVALUATION CRITERIA : PAZI'S SCORE



### DECREASE OF ITCHING INTENSITY

**50% of the cases suffering of intense itching do not have any more after the first month of study.**

*D0 : No itching  
D1 : Light itching  
D2 : Severe itching*



### DECREASE OF THE SKIN'S COVERAGE

**20 % of the cases do not have any more skin troubles after the 1st month, 70 % of the cases do not show any skin trouble after the study.**

The scoring system is the medical scale BSA.  
*N0 : No skin coverage  
N1 : 5 à 10 % of the skin covered  
N2 : 40 % of the skin covered*